

MAINTENANCE TECHNICAL SUPPORT CENTER
HEADQUARTERS MAINTENANCE OPERATIONS
UNITED STATES POSTAL SERVICE



Maintenance Management Order

SUBJECT: Collection Box Three-Point Lock

DATE: June 06, 2017

NO: MMO-100-17

TO: All Field Sites

FILE CODE: S2 S
abox:mm17098ac

Online Change Record		
Change #	Date	Description of Change
1	9/11/17	Section 3.0, Updated Table 2 to add a note for LA0002, include more descriptive information for ML0006, and add a new part: Swivel Plate with hardware (PSIN 5340170005765).

The purpose of this Maintenance Management Order (MMO) is to inform the field of a change in Collection Box security requirements. This bulletin applies to Acronym BOX and Class Codes AA, BA, CA, and DA.

To enhance the security of collection boxes, Arrow Locks and keys are required to replace Metro, Motor Vehicle, and Serial Padlocks. These no-longer-allowable padlocks and keys were used with collection boxes, including mail receptacles used for Highway Contract Routes (HCR).

In addition, all new, in-service, and/or refurbished boxes must have three-point locking mechanisms installed and functioning. Installation of an Arrow Y lock or a MAL Y lock allows these collection boxes to have three-point locking enabled as required.

Effective since 2014, all Arrow and MAL locks and keys have been provided by CompX. All lock and key products (except PO Box keys) will be ordered via on-catalog requisition thru eBUY2. The ordering process for this updated security enhancement is completely automated. For security locks, you must know your Key Code (Combination) and Zip Code prior to placing your order in eBUY2.

For current pricing, please refer to eBUY2. A current list of all lock and key products is provided on the third page of the Helping Hands newsletter #25 located on the Blue website at:

http://blue.usps.gov/purchase/operations/ops_helpinghand.htm

The attachment provides additional information regarding collection boxes affected and specifics of the three-point locks.

Direct any questions or comments concerning this bulletin to the MTSC HelpDesk, online at <https://tickets.mtsc.usps.gov/login.php> or call (800) 366-4123.

A handwritten signature in black ink, appearing to read "Kevin Couch", is displayed on a white background.

Kevin Couch
Manager
Maintenance Technical Support Center
HQ Maintenance Operations

Attachment: Three-Point Locking System Information

ATTACHMENT**THREE-POINT LOCKING SYSTEM INFORMATION****1.0. COLLECTION BOXES**

Table 1 provides detailed information for street collection boxes affected by this bulletin.

Table 1. Affected Collection Boxes

PSIN	DESCRIPTION	PSN
1170K	Standard Collection Box	7110-01-364-3061
1170EXP	Express Mail Collection Box	7110-01-364-3060
1171K	Relay Mailbox	7110-01-364-3062
1170T	Large (Dual Container) Collection Box	7110-01-000-9247
1170W	Jumbo Collection Boxes (Two Snorkel)	7110-02-000-8106
1170V	Jumbo Collection Boxes (One Snorkel)	7110-01-000-9348

2.0. ARROW LOCKS PROHIBITED FROM COLLECTION BOX USE

Do not use Arrow locks without swivel plates on any collection boxes (Figure 1).



Figure 1. Arrow Locks Prohibited on Collection Boxes - (DO NOT USE)

3.0. ARROW LOCKS ALLOWED FOR COLLECTION BOX USE

Table 2 provides PSIN and part description information for the allowable Arrow Locks with swivel plate options.

Table 2. Acceptable Arrow Locks

PSIN	DESCRIPTION
LA0002	*Arrow Y Locks w/Extension
LA0003	Arrow Y Locks w/Extension & Swivel Plate
ML0006	Modified Arrow Locks (Long Plug and Swivel Plate)
5340170005765	Swivel Plate, w/Hardware
*NOTE: Arrow Y Locks w/Extension (without Swivel Plates) must be modified with Swivel Plate (5340170005765), in order to add the locking rods. LA0002 is not acceptable for use without the Swivel Plates.	

Closely inspect the Arrow lock to ensure that a swivel plate version has been installed (Figure 2).

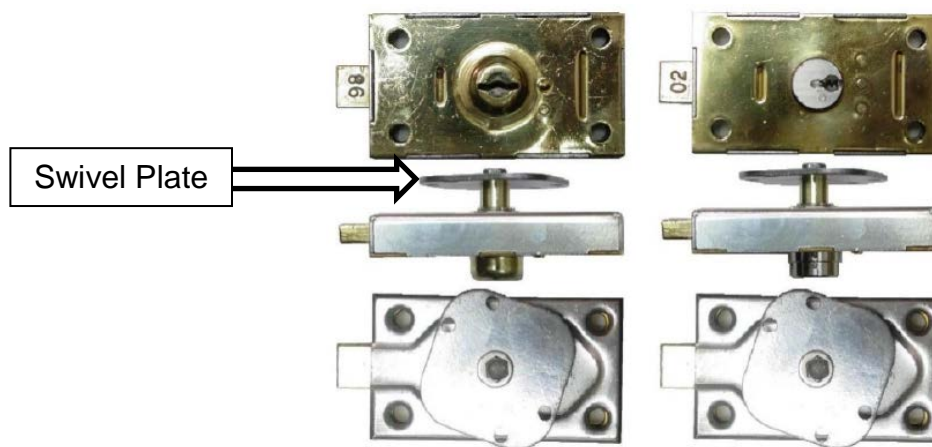


Figure 2. Arrow Y Locks (Standard and Modified)

4.0. ARROW LOCK WITH LOCKING RODS INSTALLATION EXAMPLE

Verify that the mailbox locking rods are securely connected to an Arrow Y Lock and function properly. See Figure 3 below for an example of a proper installation (shown is a PSIN 1170K Collection Box).



Figure 3. PSIN 1170K Collection Box Locking Rods

Figure 4 shows an exploded-view example of an Arrow Lock installation (an 1170K produced by Matthews Industries). Note that all components are required for proper functioning of the Arrow Lock and locking rods.

Table 3 lists detailed information for all locking rod types for collection boxes in the field.

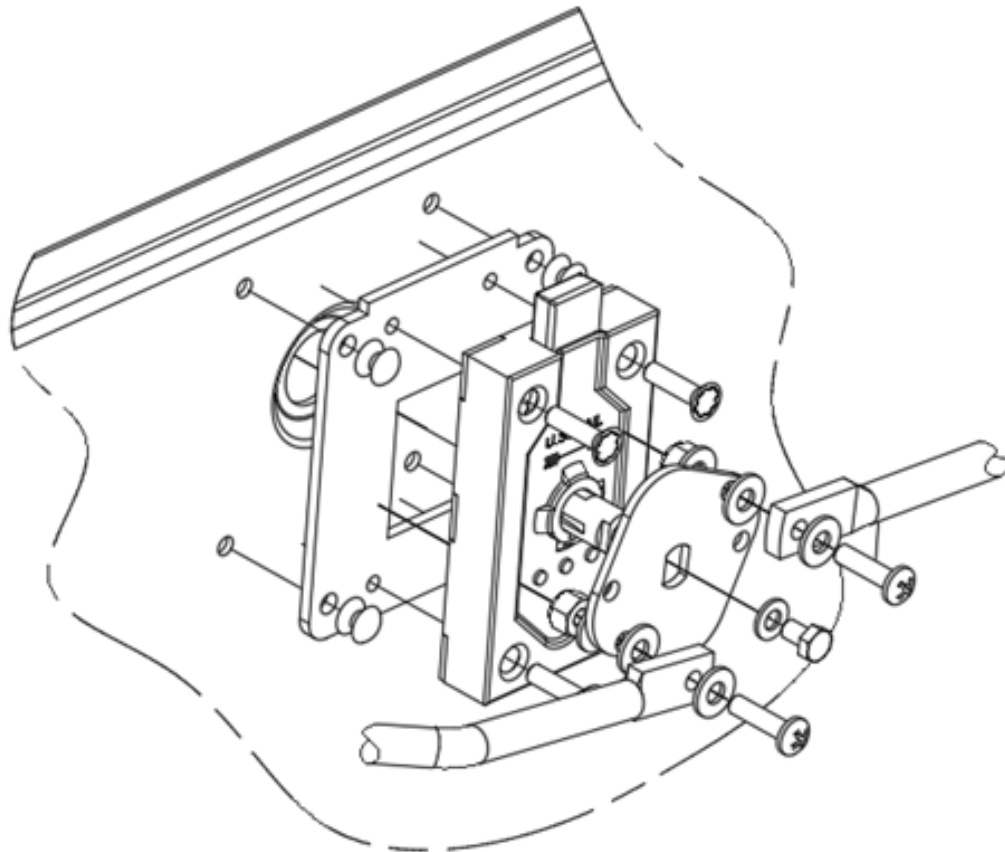


Figure 4. Arrow Lock with Swivel Plate – Example 1

Table 3. Arrow Lock with Swivel Plate Details

PSN	ROD PN	BOX PSIN	BOX NAME	LOCATION	QTY	BOX SIZE
7110-12-000-5548	267718-1	1170R	"Flat Top" Jumbo (Obsolete)	Both	2 ea.	22.12"
7110-12-000-5543	245085-1	1171K	Relay	Bottom	1 ea.	18.06"
7110-12-000-5545	245085-3	1171K	Relay	Top	1 ea.	11.62"
7110-12-000-5546	245085-4	1170T	Large	Top	1 ea.	17.25"
7110-12-000-5547	245085-5	1170T	Large	Bottom	1 ea.	16.38"
7110-08-000-4545	267718-3	1170Q & 1170W	Jumbo ("Small") (Obsolete)	Both	2 ea.	16.06"
7110-12-000-5542	234024	1170K & 1170EXP	Standard	Both	2 ea.	8.25"
7110-08-000-4544	267718-2	1170V & 1170S	Jumbo ("Large")	Both	2 ea.	20.14"