



# maintenance management order

**SUBJECT:** Potential Hazard Freight Elevator Gate  
Counterweight Connecting Bolt

**DATE:** August 30, 1999

**NO:** MMO-064-99

- TO:**
1. Maintenance Capable Offices
  2. Plant Manager, Maintenance Capable Offices
  3. USPS Elevator/Boiler Inspectors
  4. Manager, Maintenance Support, Area Offices
  5. Manager, Safety & Health, District Offices
  6. Safety Specialist, Plant
  7. Human Resource Analyst/Safety, Area Offices
  8. Manager, Safety & Health, Headquarters

**FILE CODE:** P

ralb:M99074AA

The purpose of this Maintenance Management Order (MMO) is to alert offices with freight elevators of a potential hazard with freight car gates designed with a single gate counterweight assembly. Some of the manufacturers of this type of design are Courion Industries, Harris Prebble, Guilbert, Security Door and The Peelle Co.

The design of these gates may pose a hazard with the connecting bolt for the gate counterweight. Failure of this bolt can result in the freight car gate closing unexpectedly.

A qualified elevator mechanic, authorized to enter a hoistway using appropriate hazardous energy control procedures, should examine the connecting bolt for wear and to ensure the bolt is SAE Grade 8 or higher.

Figure 1 shows the location of a typical gate counterweight connecting bolt assembly. Figure 2 provides detail of the bolt location and typical SAE Grade 8 bolt head marking. Figure 3 provides an example of a worn, non-SAE Grade 8 bolt. Figure 4 provides an example of the gate counterweight connecting bolt assembly.

Direct any questions or comments concerning this bulletin to the HelpDesk, Maintenance Technical Support Center, P.O. Box 1600, Norman OK 73070-6708; telephone FTS 2000 (405) 573-2123 or toll free (800) 366-4123.

Rex M. Gallaher  
Manager  
Maintenance Technical Support Center  
Maintenance Policies and Programs

Attachment: Figures

SAFETY BULLETIN

SAFETY BULLETIN

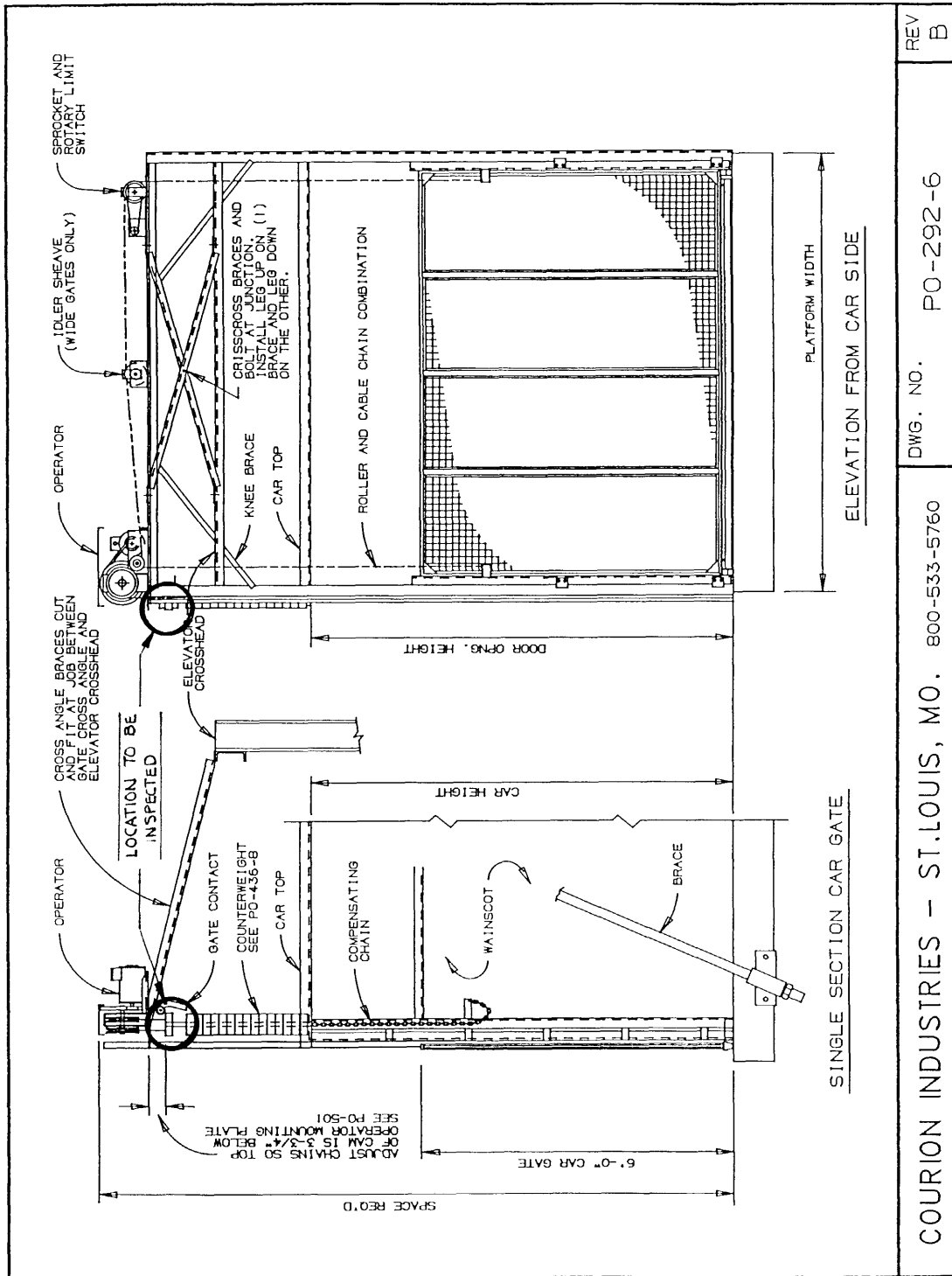
SAFETY BULLETIN

SAFETY BULLETIN



**ATTACHMENT**

**FIGURES**



COURION INDUSTRIES - ST. LOUIS, MO. 800-533-5760	DWG. NO. PO-292-6	REV B
--	-------------------	-------

**Figure 1. Typical Freight Elevator Gate Assembly**

SAFETY BULLETIN

SAFETY BULLETIN

SAFETY BULLETIN

SAFETY BULLETIN

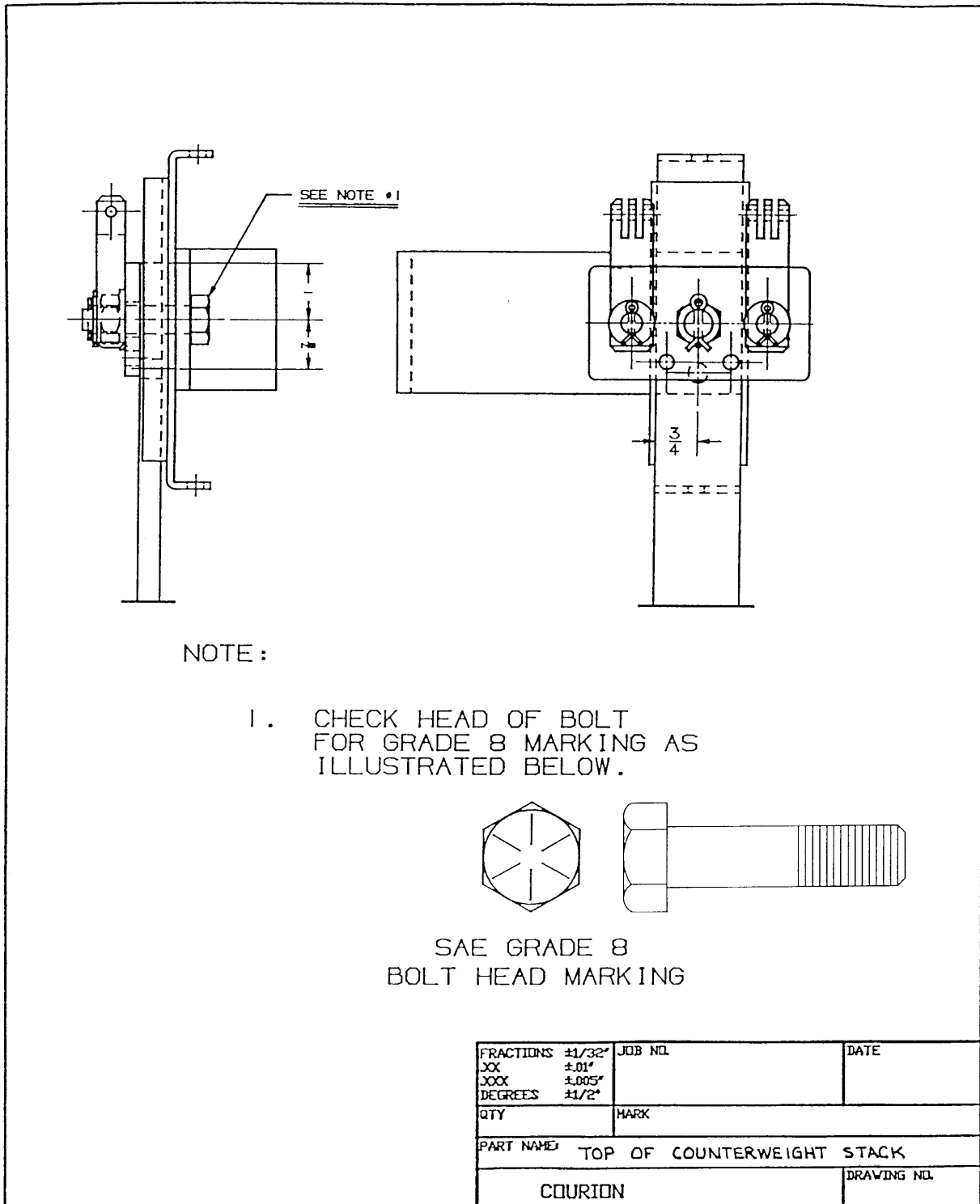


Figure 2. Location of Counterweight Bolt and SAE Grade 8 Bolt Marking

SAFETY BULLETIN

SAFETY BULLETIN



**Figure 3. Worn Non-SAE Grade 8 Bolt**



**Figure 4. Gate Counterweight Connecting Bolt Assembly**